



## ALABAMA DEPARTMENT OF TRANSPORTATION

1409 Coliseum Boulevard, Montgomery, Alabama 36110  
Bureau of Office Engineer  
Plans and Proposals Section  
Telephone: 334-242-6444 FAX: 334-264-7976  
[www.dot.state.al.us](http://www.dot.state.al.us)



Kay Ivey  
Governor

John R. Cooper  
Transportation Director

December 1, 2023

### MEMORANDUM

To: Proposal Holders

From: Bryan E. Nichols  
Assistant Bureau Chief *BN*

Subject: NH-0013(637)  
Tuscaloosa County  
December 8, 2023 Letting

Enclosed are the Revised Plan Sheet Nos. 1A and 2A for the above referenced project. See the attached letter from Mr. Jacob Levins, P.E., West Central Region Design Engineer dated December 1, 2023.

It is the bidder's responsibility to notify vendors, suppliers and subcontractors of this change.

This change must be incorporated into your proposal and used in the preparation of your bid. Failure to do so may cause your bid to be considered irregular and non-responsive and may result in the automatic rejection of your bid.

BEN/mrs

Attachment

cc: Mr. Wallace McAdory, P.E.



Kay Ivey  
Governor

## ALABAMA DEPARTMENT OF TRANSPORTATION

WEST CENTRAL REGION  
OFFICE OF THE REGION ENGINEER  
204 Marina Drive  
P. O. Box 70070, Tuscaloosa, Alabama 35406  
Telephone: 205-553-7030  
Fax: 205-556-0900



John R. Cooper  
Transportation Director

December 1, 2023

Mr. Joe Lister, Jr., P.E.  
State Office Engineer  
Alabama Department of Transportation  
1409 Coliseum Blvd.  
Montgomery, AL 36110-2060

RE: Project No. NH-0013(637)  
Resurfacing on SR-13 (US-43) from 0.27 Mile South of Northside Road to Fayette  
County Line  
Micro-Milling, Resurfacing, Scoring, and Guardrail  
Tuscaloosa County  
Flagged Revision #1

Dear Mr. Lister,

Attached are full size (PDF) of flagged revised sheets on the above-mentioned project for the revision of a tie-in detail title discovered during the investigation of a contractor's question.

The following sheets were revised:

Sheet 1A:


- Flagged sheet 2A for changes made on 12-1-23.

Sheet 2A:

- Changed title of bottom right detail from "Tie-In Detail at Begin/End Project" to "Tie-In Detail at Bridges/ Bridge Culverts."

Please notify to all potential bidders.

Sincerely,

  
Jacob Levins, P.E.  
West Central Region Design Engineer

JML  
attachments  
cc: File

# INDEX TO SHEETS

REFERENCE PROJECT NO	FISCAL YEAR	SHEET NO
NH-0013(637)	2024	1A

SHEET NO	DESCRIPTION
1	TITLE SHEET
1A	INDEX TO SHEETS
1B	INDEX TO SPECIAL AND STANDARD DRAWINGS
1C	PLANS LEGEND SHEET
1D	PLANS LEGEND SHEET ABBREVIATIONS
1 2-2A	TYPICAL SECTIONS
2B	PROJECT NOTES SHEET
2C-2D	TRAFFIC SIGNAL PLAN NOTES
2E-2F	GENERAL TRAFFIC CONTROL PLAN NOTES
3-3B	SUMMARY OF QUANTITIES
4	TRAFFIC SIGNAL LOOP LAYOUT SHEET
5-8	OMITTED
9	TRAFFIC CONTROL PLAN SUMMARY SHEET
10-11	SPECIAL PROJECT DETAIL: STANDARD DETAILS FOR TRAFFIC CONTROL PLANS
12	SPECIAL PROJECT DETAIL: DETAILS FOR TRAFFIC CONTROL FOR RESURFACING TWO LANE HIGHWAYS (PILOT CAR METHOD)
13	SPECIAL PROJECT DETAIL: DETAILS OF CENTERLINE SCORING
14	SPECIAL PROJECT DETAIL: GUARDRAIL HEIGHT ADJUSTMENT
15	SPECIAL PROJECT DETAIL: DETAILS FOR STRIPED ISLANDS

1 - REVISED SHEET 2A  
ON 12-1-23. JML



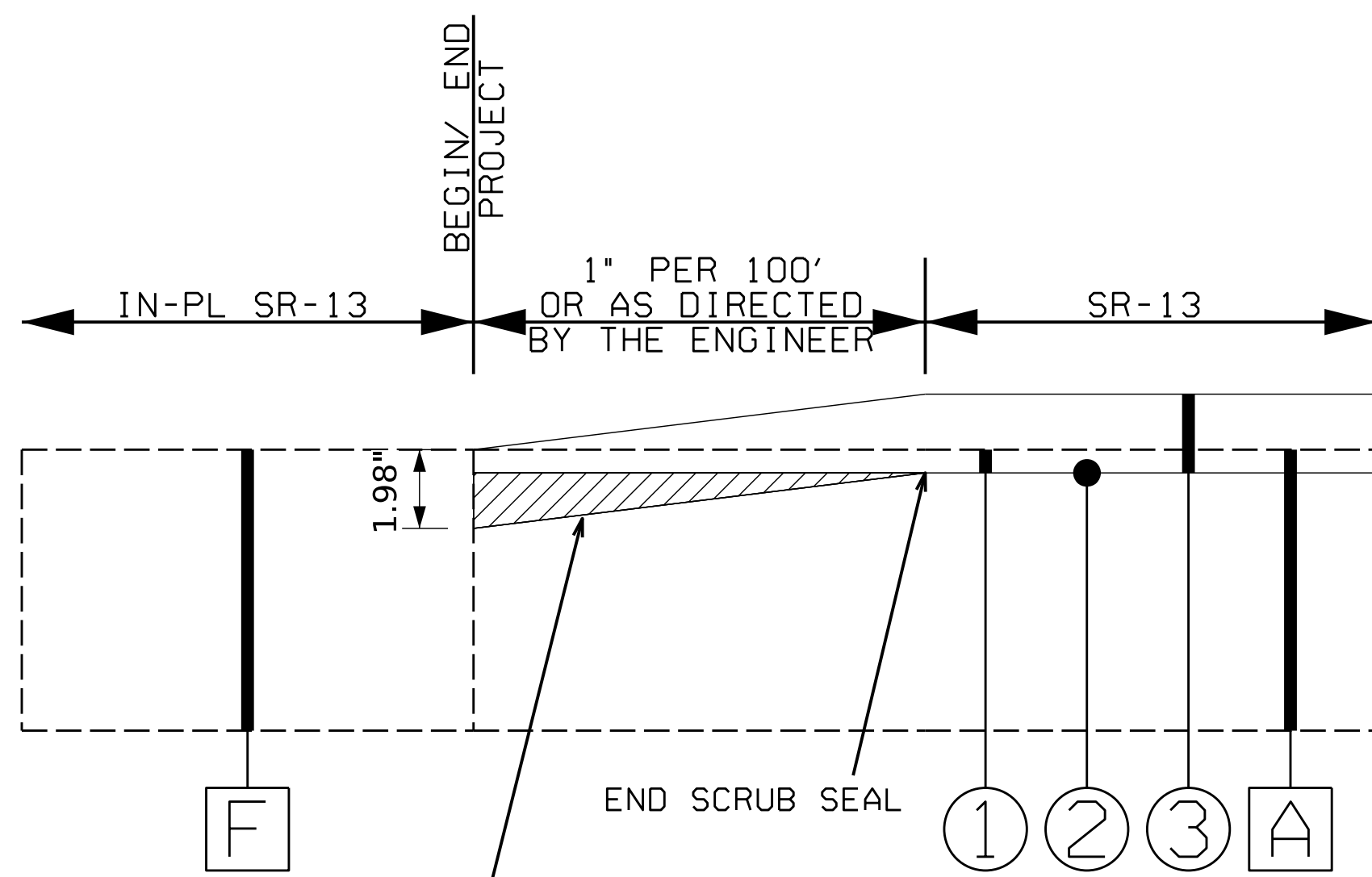
REVISIONS:

PLAN SUBMITTAL	PLANS PREPARED BY:
OE	WEST CENTRAL REGION

SHEET TITLE	ROUTE
INDEX TO SHEETS	SR-13

# TYPICAL SECTION

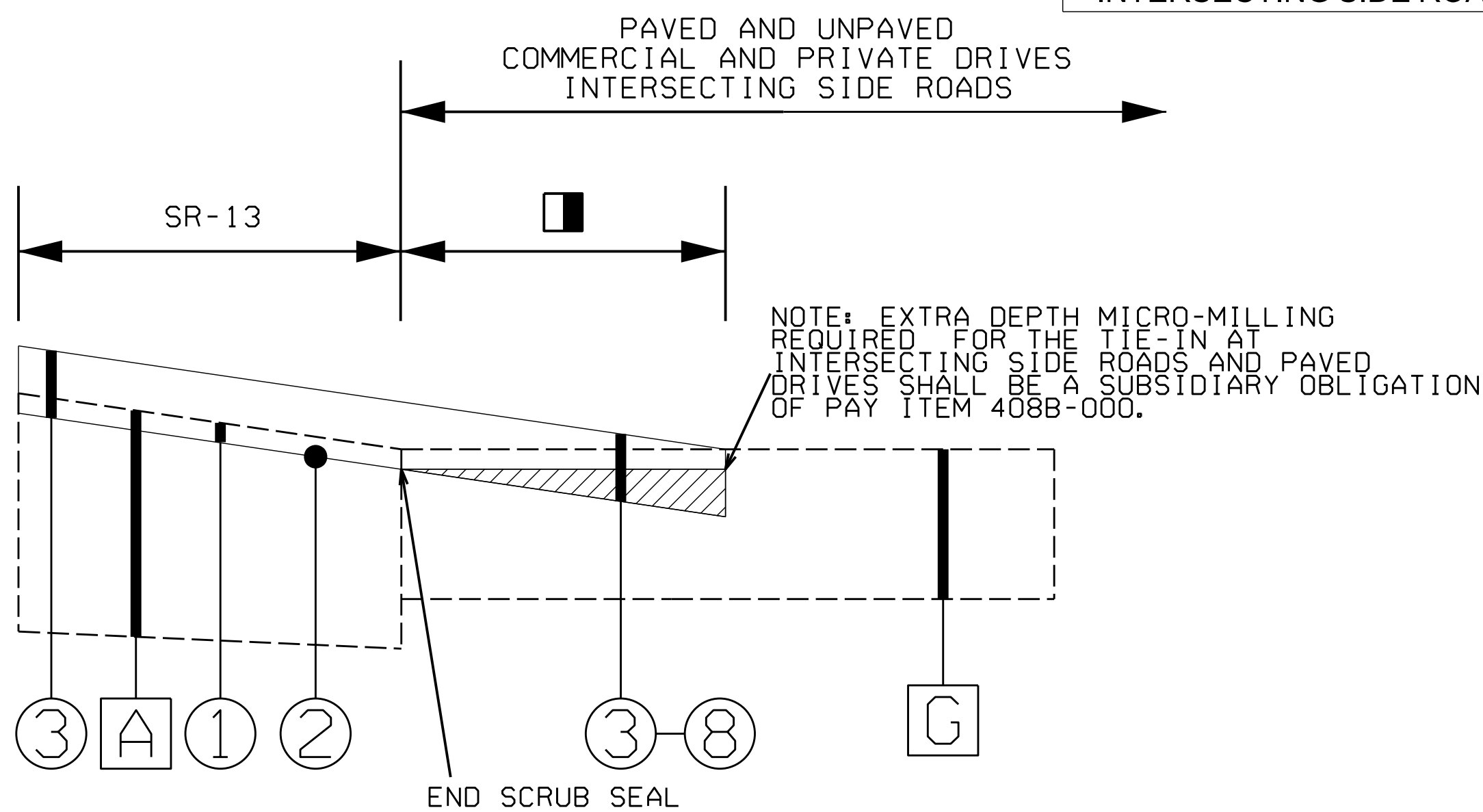
REFERENCE PROJECT NO	FISCAL YEAR	SHEET NO
NH-0013(637)	2024	2A



NOTE: EXTRA DEPTH MICRO-MILLING REQUIRED FOR FULL DEPTH TIE-IN SHALL BE A SUBSIDIARY OBLIGATION OF PAY ITEM 408B-000.

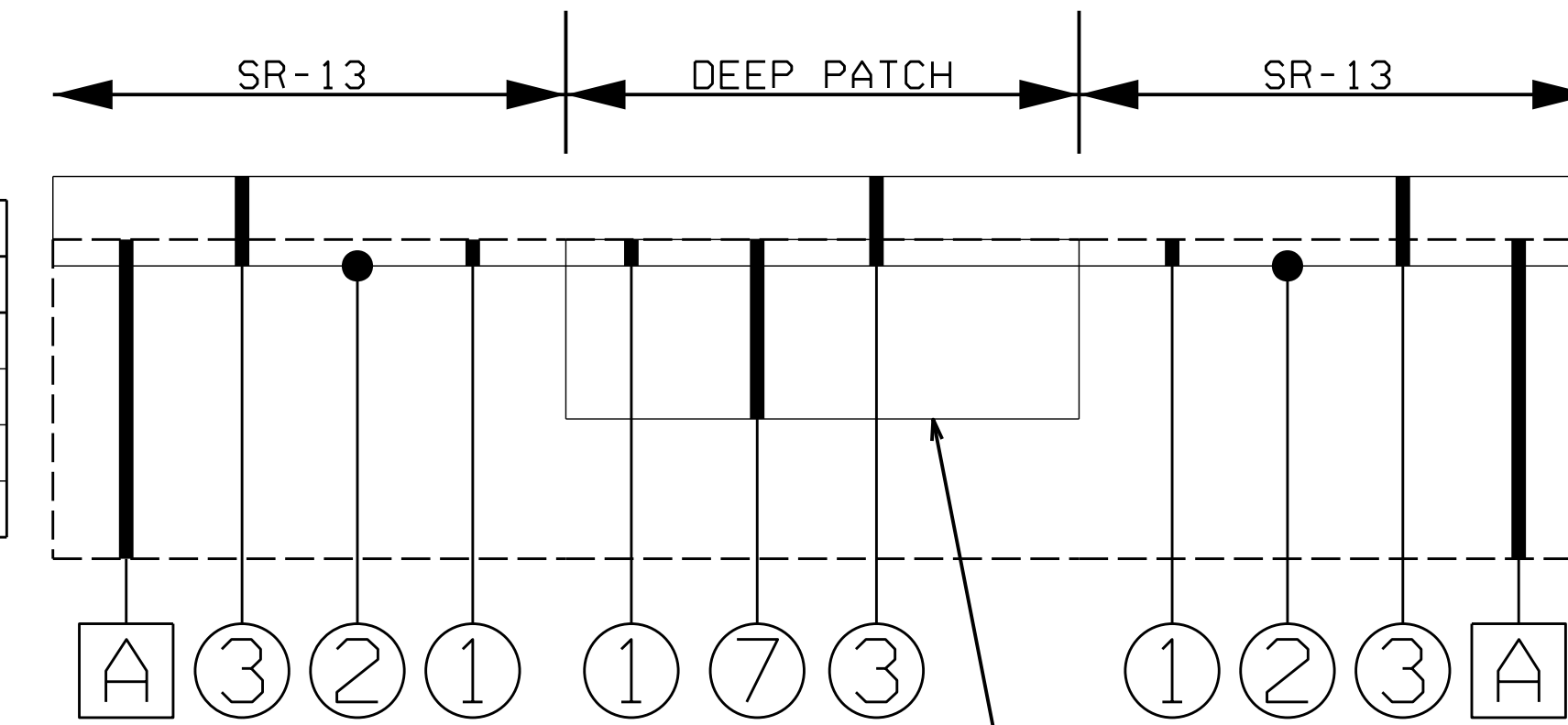
TIE-IN DETAIL AT BEGIN/ END PROJECT

DESCRIPTION	FEET	PAY ITEM
PAVED PRIVATE TURNOUTS	3'	424A-360
UNPAVED PRIVATE TURNOUTS	15'	424A-369
COMMERCIAL TURNOUTS	10'	424A-369
INTERSECTING SIDE ROADS	VARIES TO ROW	424A-360



TIE-IN DETAIL FOR SIDE ROADS AND DRIVES

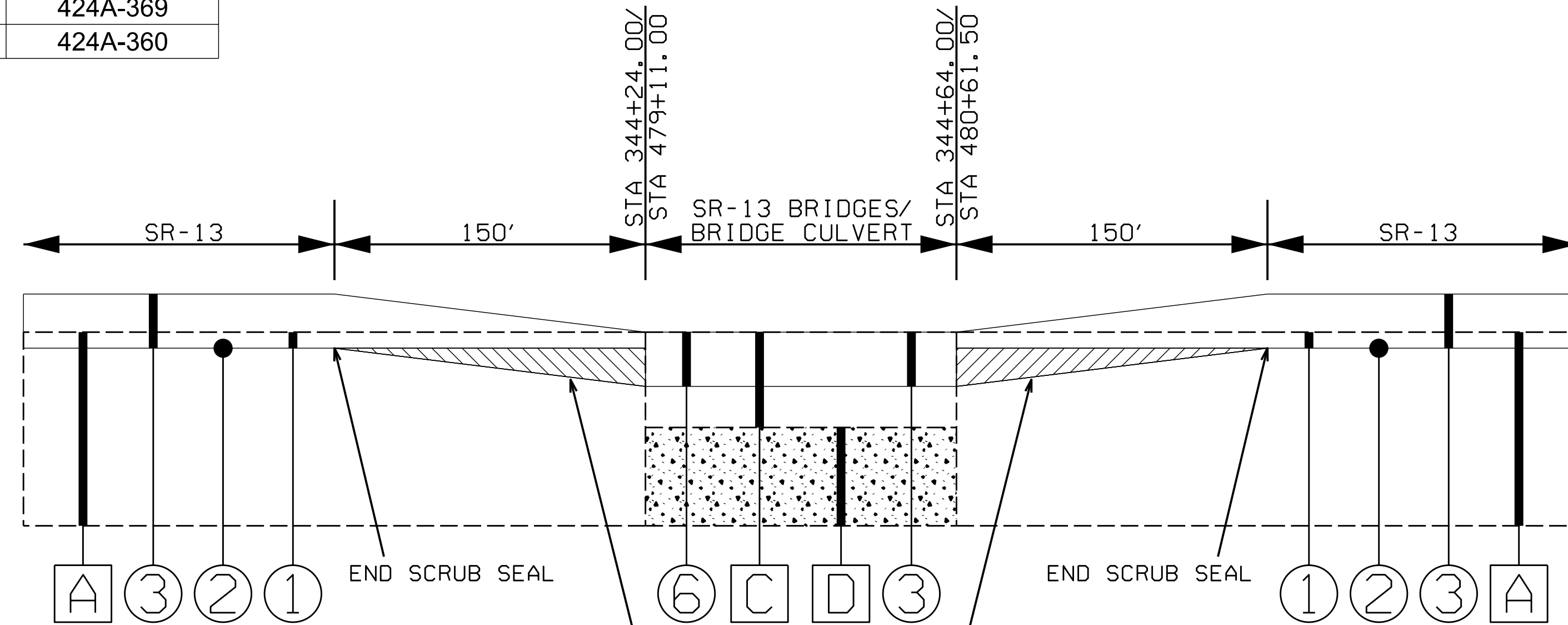
DEEP PATCHING SCHEDULE			
BEGIN STA	END STA	SIDE	WIDTH (FT)
282+32.00	283+12.00	LT	12
424+88.00	429+88.00	LT	12
443+36.00	444+51.00	RT	12
482+96.00	493+52.00	LT	12



NOTE: SCRUB SEAL SHALL NOT BE PLACED ON TOP OF ANY DEEP PATCHING AREAS.

DEEP PATCHING DETAIL

PROJECT NOTES:  
200  
201  
202  
203  
204  
205  
206  
207  
208



NOTE: EXTRA DEPTH MICRO-MILLING REQUIRED FOR FULL DEPTH TIE-IN SHALL BE A SUBSIDIARY OBLIGATION OF PAY ITEM 408B-000.

TIE-IN DETAIL AT BRIDGES/ BRIDGE CULVERTS

1 - REVISED SHEET TITLE FROM "TIE-IN DETAIL AT BEGIN/ END PROJECT" TO "TIE-IN DETAIL AT BRIDGES/ BRIDGE CULVERTS" ON 12-1-23. JML

IN-PLACE AND REQUIRED MATERIALS LEGEND			
LEGEND NO	ITEM NO	DESCRIPTION	
A	IN-PLACE:	BITUMINOUS CONCRETE PAVEMENT (MICRO-MILL, RETAIN, AND OVERLAY) (APPROXIMATE THICKNESS VARIES FROM 4.5" TO 13")	
C	IN-PLACE:	BITUMINOUS CONCRETE PAVEMENT (MICRO-MILL, RETAIN, AND OVERLAY) (APPROXIMATE THICKNESS VARIES FROM 2.5" TO 6")	
D	IN-PLACE:	CONCRETE BRIDGE DECK/ CONCRETE BRIDGE CULVERT (RETAIN)	
F	IN-PLACE:	BITUMINOUS CONCRETE PAVEMENT (RETAIN) (APPROXIMATE THICKNESS VARIES FROM 4.5" TO 13")	
G	IN-PLACE:	DRIVEWAY/ SIDE ROAD (RETAIN)	
1	REQUIRED:	408B-000	MICRO-MILLING EXISTING PAVEMENT (APPROXIMATELY 0.00" THRU 1.00" THICK) (MICRO-MILL 0.50" THICK)
2	REQUIRED:	433A-000	SCRUB SEAL (WIDTH VARIES 28'-40')
3	REQUIRED:	424A-360	SUPERPAVE BITUMINOUS CONCRETE WEARING SURFACE LAYER, 1/2" MAXIMUM AGGREGATE SIZE MIX, ESAL RANGE C/D (APPROXIMATELY 220 LB/YD2)
6	REQUIRED:	408B-001	MICRO-MILLING EXISTING PAVEMENT (APPROXIMATELY 1.10" THRU 2.00" THICK) (MICRO-MILL 2.00" THICK)
7	REQUIRED:	424B-655	SUPERPAVE BITUMINOUS CONCRETE UPPER BINDER LAYER, PATCHING, 1" MAXIMUM AGGREGATE SIZE MIX, ESAL RANGE C/D (APPROXIMATELY 500 LB/YD2)
8	REQUIRED:	424A-369	SUPERPAVE BITUMINOUS CONCRETE WEARING SURFACE LAYER, WIDENING, 1/2" MAXIMUM AGGREGATE SIZE MIX, ESAL RANGE C/D (APPROXIMATELY 220 LB/YD2)



REVISIONS:

PLAN SUBMITTAL  
OE

PLANS PREPARED BY:  
WEST CENTRAL REGION

NOT TO SCALE

SHEET TITLE  
TYPICAL SECTION

ROUTE  
SR-13