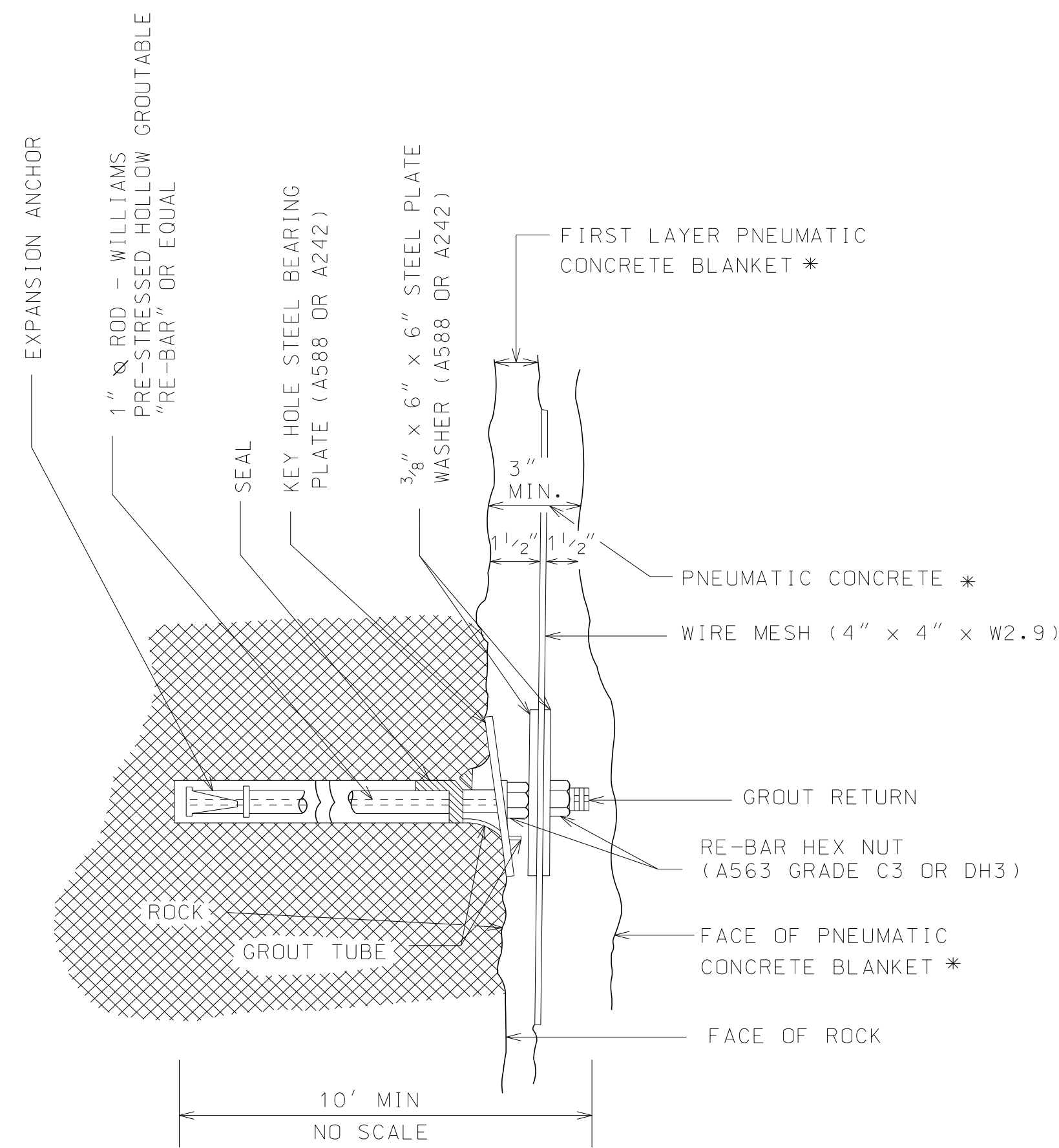
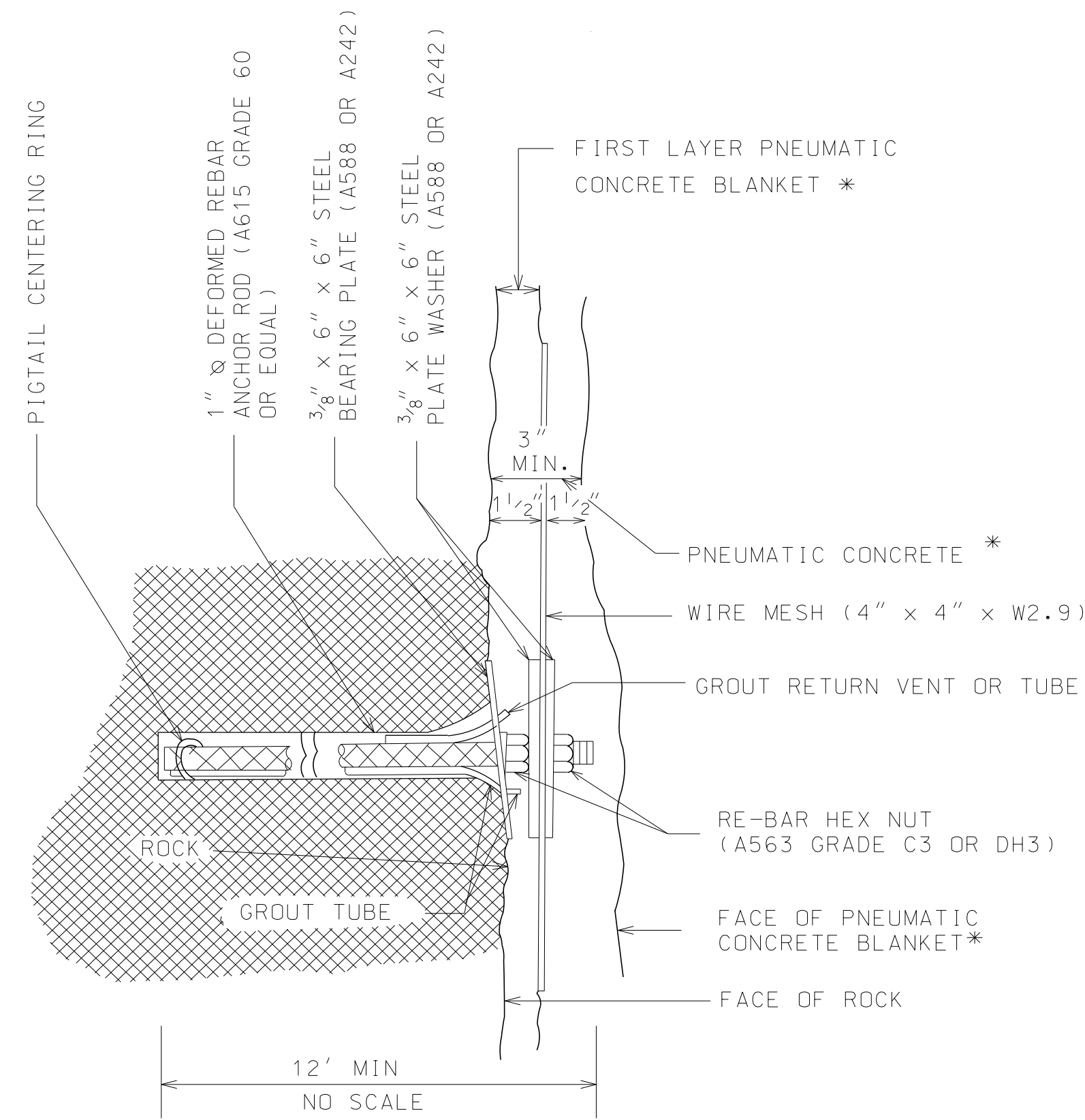


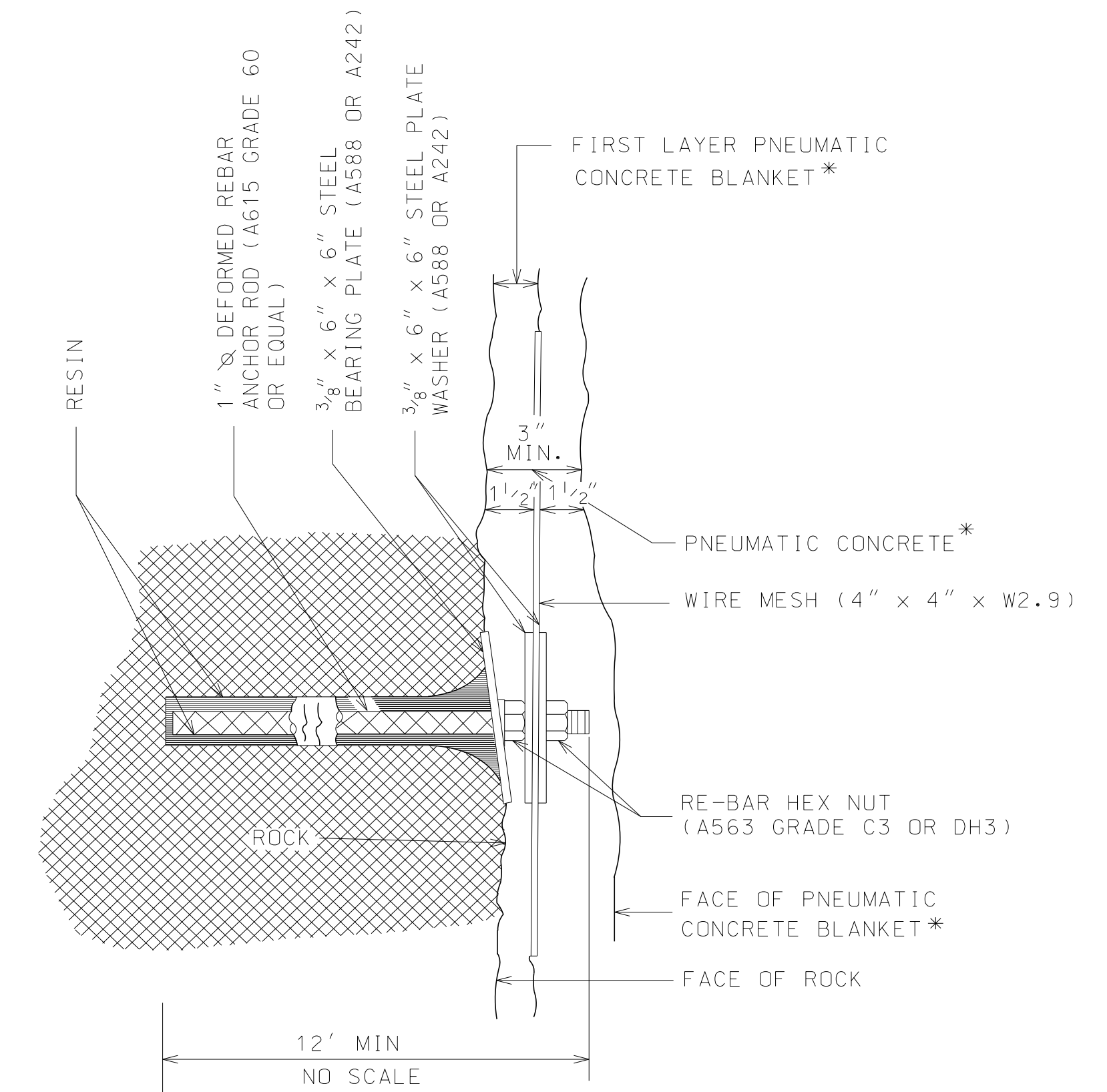
REFERENCE PROJECT NO	FISCAL YEAR	SHEET NO



SECTION "AA"
ALTERNATE NO 1
WILLIAMS HOLLOW CORE SYSTEM



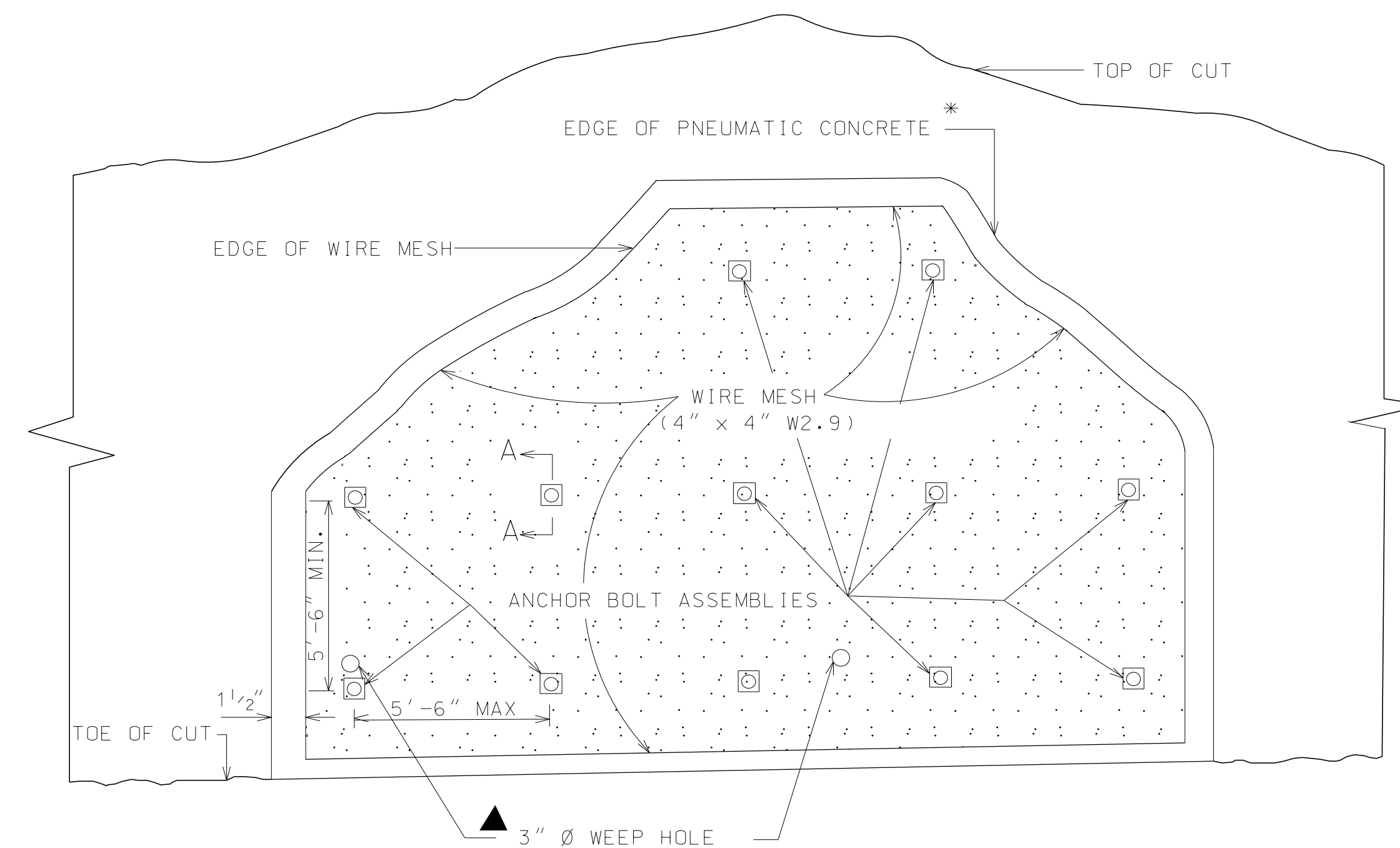
SECTION "AA"
ALTERNATE NO 2
TWO TUBE SYSTEM




SECTION "AA"
ALTERNATE NO 3
RESIN OR PRE-MEASURED
GROUT SYSTEM

* NOTE: ALL REFERENCES TO PNEUMATIC CONCRETE BLANKET ALSO WILL APPLY TO SHOTCRETE CONCRETE MIX (SECTION 571) IF CALLED FOR IN THE PLANS AND SPECIFICATIONS AS PER THE BUREAU OF MATERIALS AND TESTS RECOMMENDATION.

▲ NOTE: 3" Ø WEEP HOLES SPACED AS DIRECTED BY THE ENGINEER



DETAILS OF PNEUMATIC BLANKET*
(TO BE USED AT LOCATIONS AS DIRECTED BY THE ENGINEER)

--SPECIFICATIONS-- CURRENT ALABAMA DEPARTMENT OF TRANSPORTATION		
THIS DRAWING REPRESENTS DESIGNS PREPARED FOR USE BY THE ALABAMA DEPARTMENT OF TRANSPORTATION AND IS NOT TO BE COPIED, REPRODUCED, ALTERED, OR USED BY ANYONE, OR ANY ORGANIZATION, WITHOUT THE EXPRESSED WRITTEN CONSENT OF THE ALABAMA DEPARTMENT OF TRANSPORTATION REPRESENTATIVE AUTHORIZED TO APPROVE THIS USE. ANYONE MAKING UNAUTHORIZED USE OF THIS DRAWING MAY BE PROSECUTED TO THE FULLEST EXTENT OF THE LAW.		
REVISIONS 1. Added to CADD on 10-13-00 by J.F.T. 2. Adjusted note to reference the use of SHOTCRETE Concrete Mix 08-04-06 W.W.A.	 ALABAMA DEPARTMENT OF TRANSPORTATION 1409 COLISEUM BOULEVARD MONTGOMERY, AL 36130-3050	DESIGN BUREAU SPECIAL DRAWING PNEUMATIC CONCRETE BLANKET AND ALTERNATES FOR INSTALLATION OF ANCHOR BOLT ASSEMBLIES
Bureau Std Engr: D.J.W. DRAWN BY: _____ DATE DRAWN: 12-16-87	SPECIAL DRAWING NO PCB-217	INDEX NO 21701

NOT TO SCALE