

SPACING FOR DELINEATORS ON HORIZONTAL CURVES (THROUGH ROADWAY ONLY) (LIN FT)

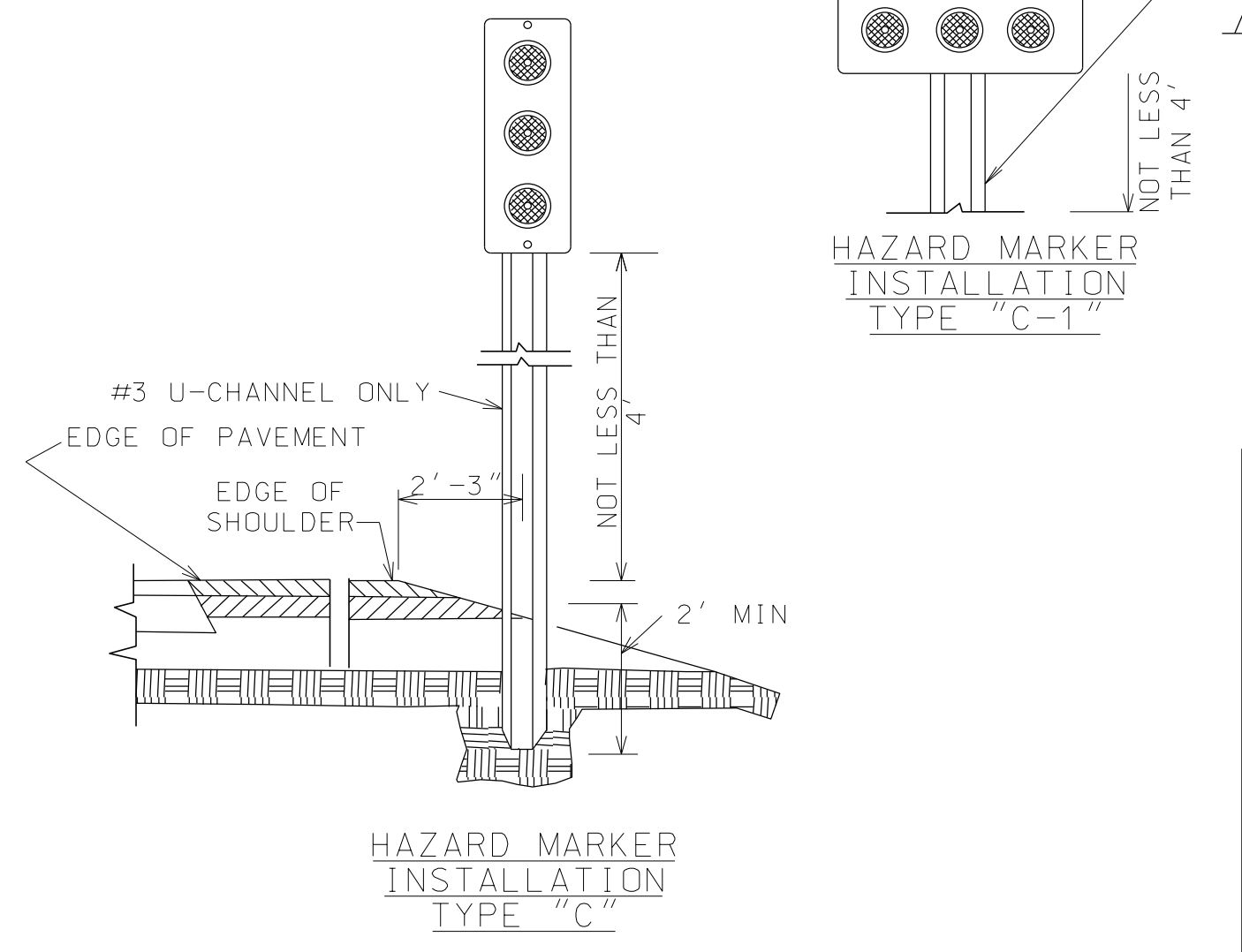
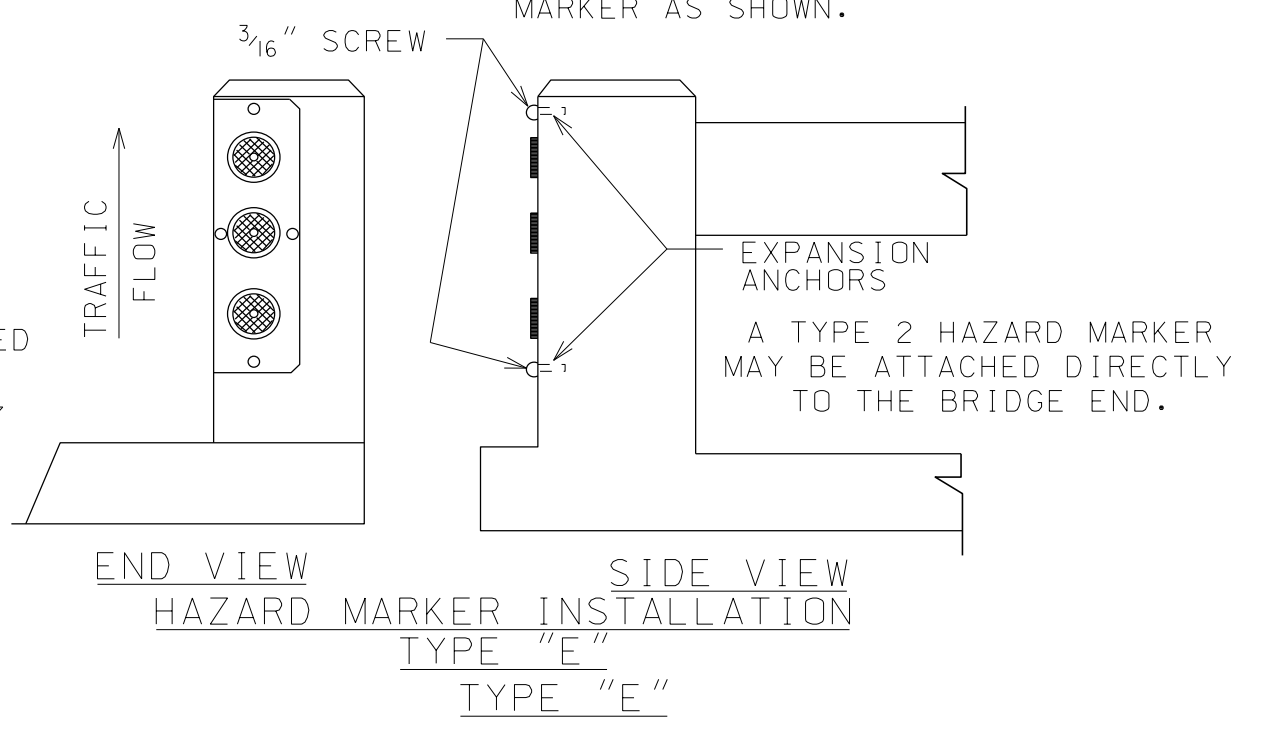
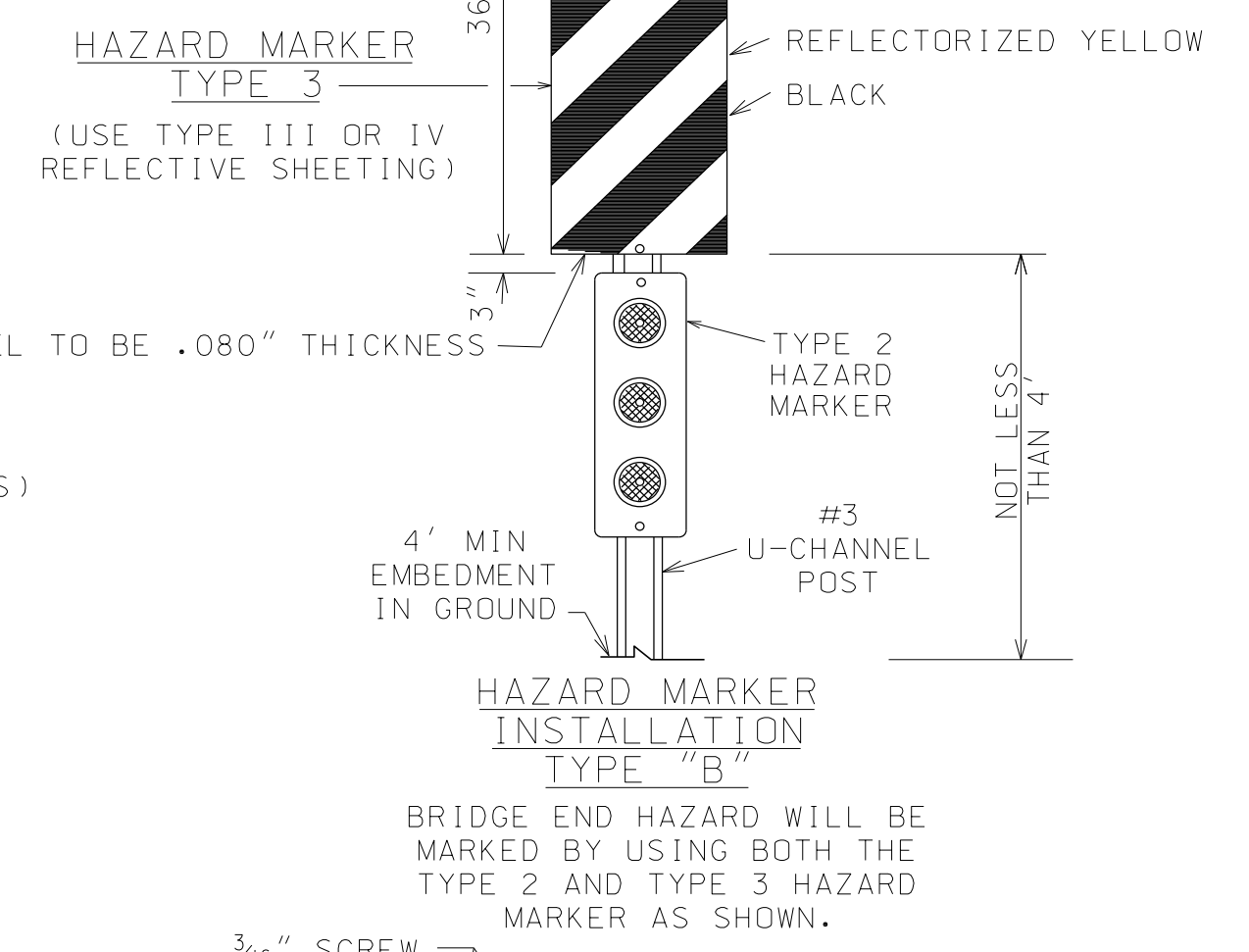
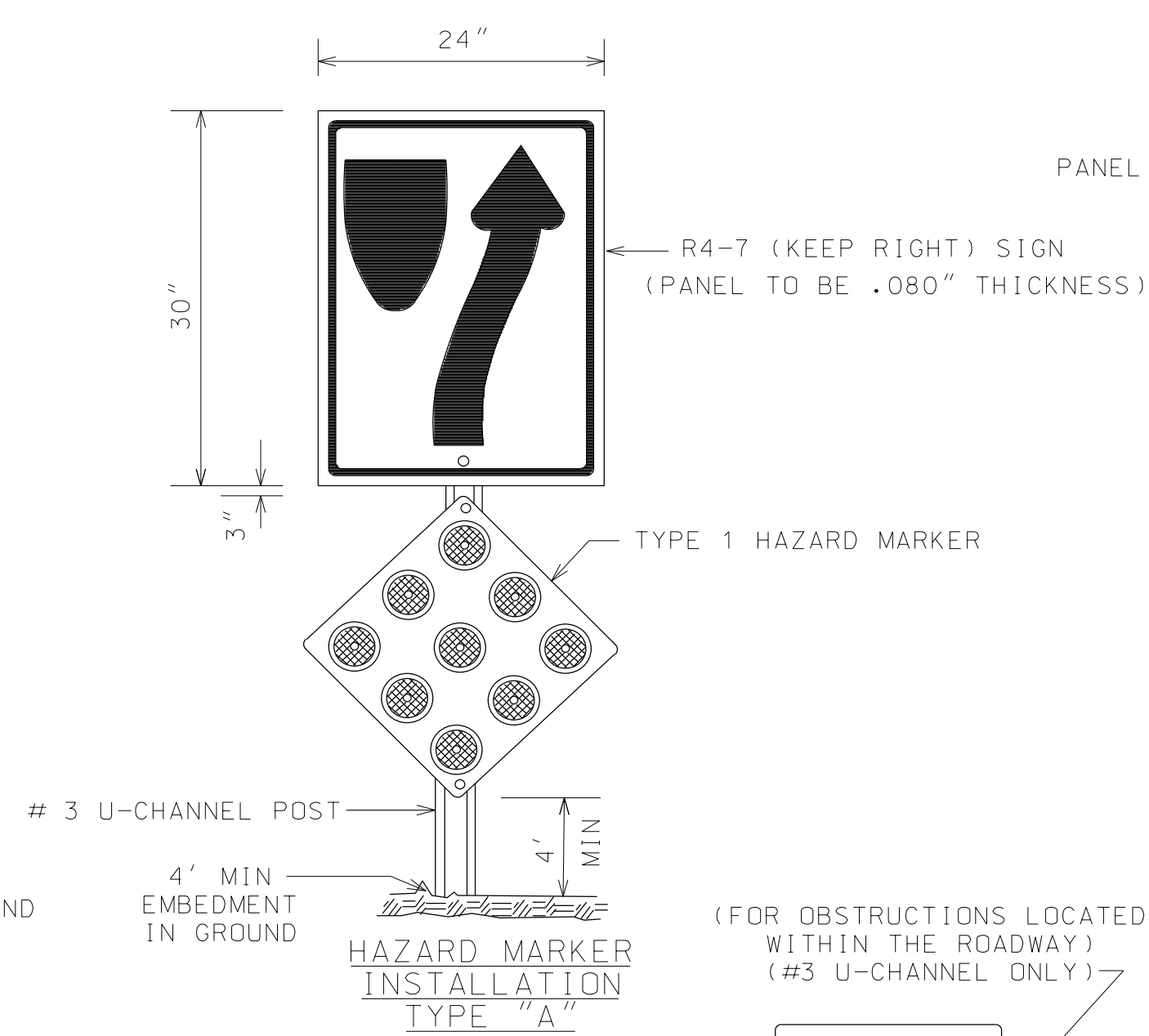
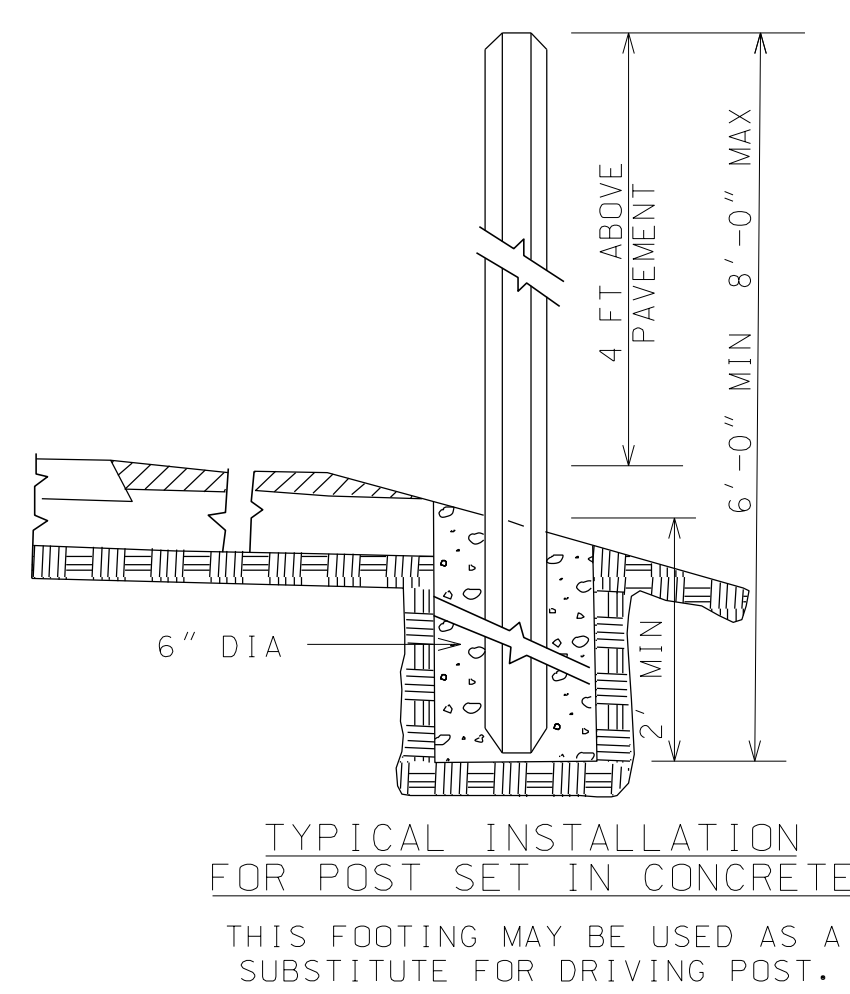
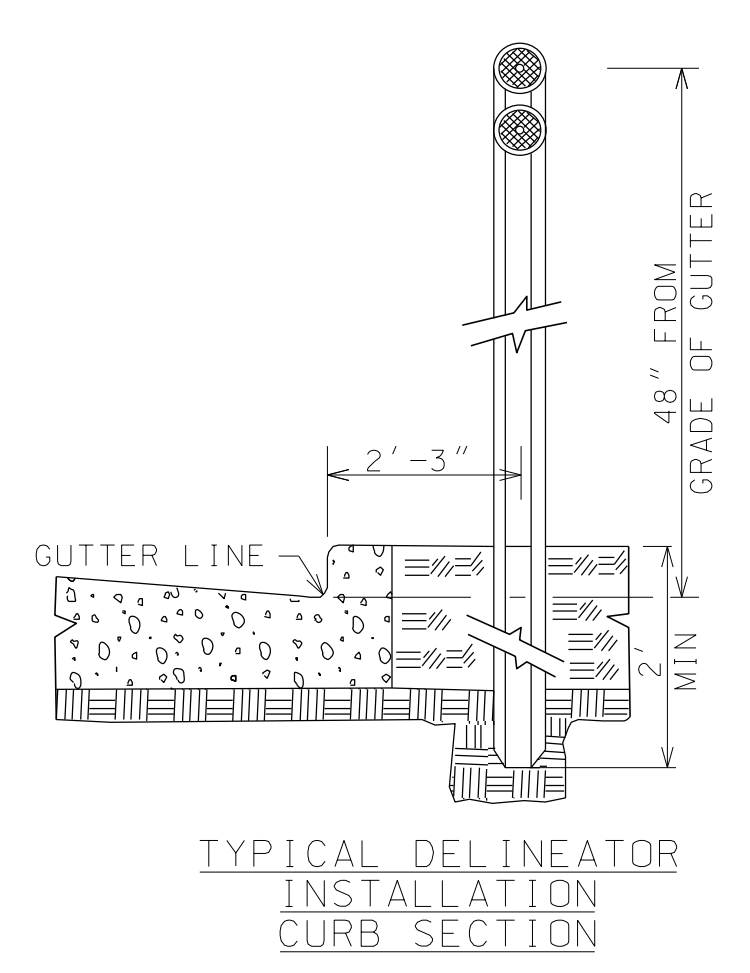
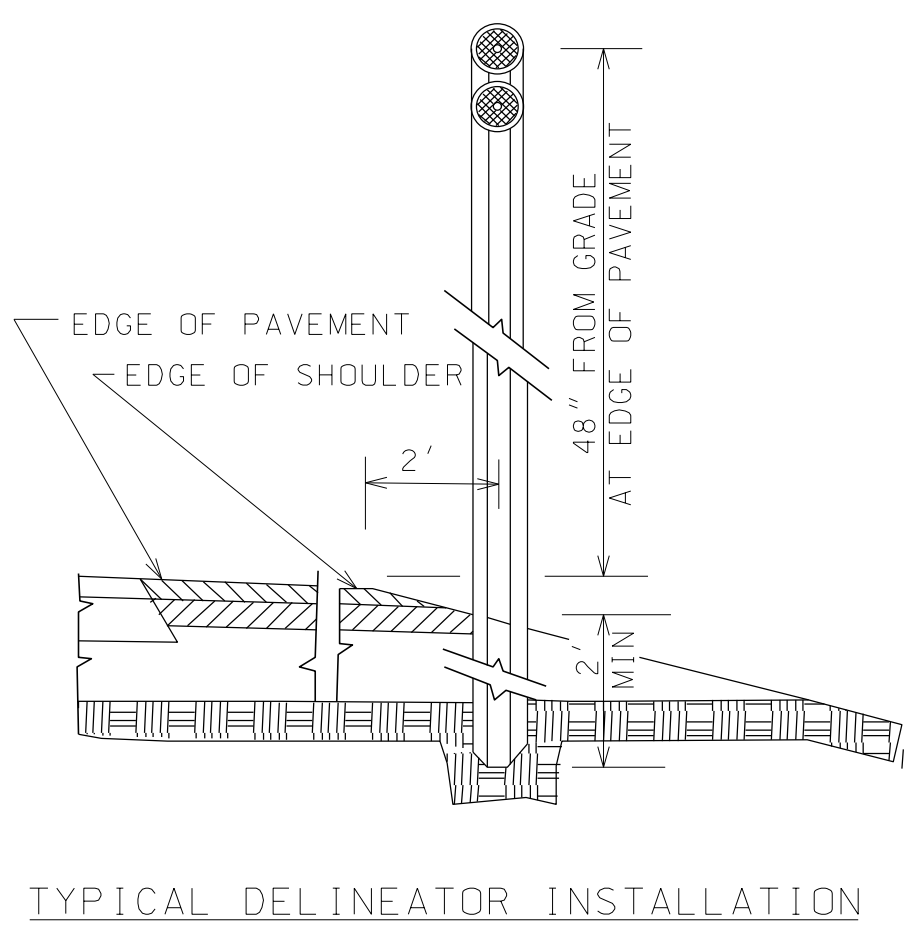
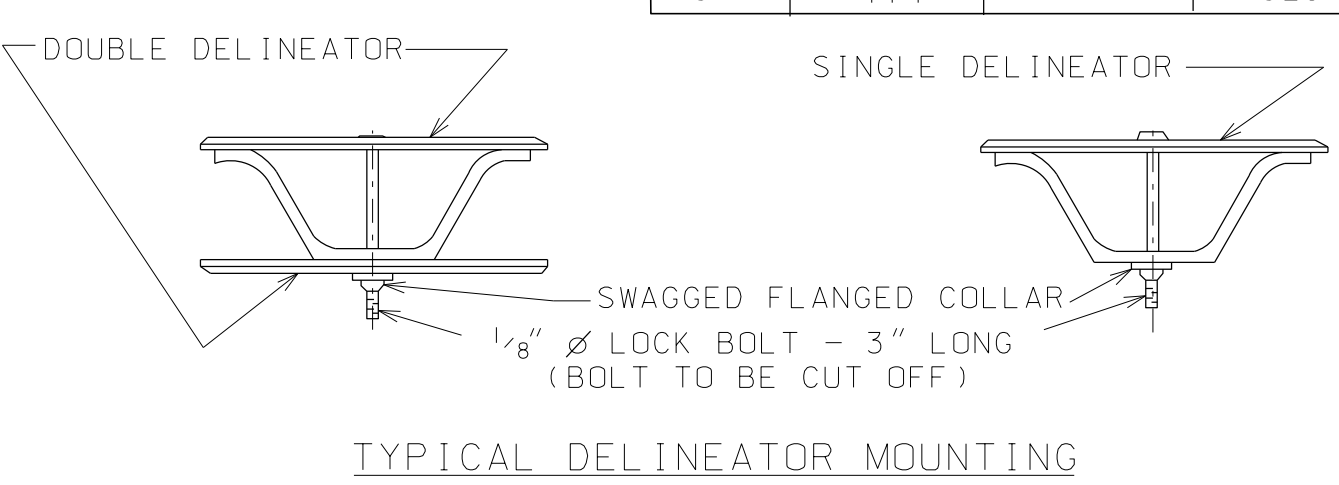
RADIUS ON CURVES	1ST SPACE	2ND SPACE	3RD SPACE
1°	528	528	528
2°	280	528	528
3°	227	454	528
4°	196	392	528
5°	174	348	523

NOTE: THE CONTRACTOR AT HIS OPTION MAY SUBSTITUTE #3 U-CHANNEL WITH HOLES PUNCHED (1) ONE INCH ON CENTERS IN LIEU OF ONE SHOWN. FLEXIBLE DELINEATOR POST MAY BE USED IN LIEU OF STEEL OR ALUMINUM.

MAX SPACING FOR DELINEATORS ON HORIZONTAL CURVES

RADIUS OF CURVE (ft)	SPACING ON CURVE (ft)	SPACING IN ADVANCE & BEYOND CURVE		
		1ST	2ND	3RD
50	20	40	60	120
150	30	60	90	180
200	35	75	110	220
250	40	85	125	255
300	50	95	140	285
400	55	110	170	300
500	65	125	190	300
600	70	140	210	300
700	75	155	230	300
800	80	170	245	300
900	85	175	260	300
1000	90	185	275	300

NOTE: SPACING FOR SPECIFIC RADII MAY BE COMPUTED FROM THE FORMULA $S = 3\sqrt{R-50}$. THE MINIMUM SPACING SHOULD BE 20 FT AND MAX OF 300 FT ON CURVES. THE SPACING OF THE FIRST DELINEATOR APPROACHING A CURVE IS 2S, THE SECOND IS 3S AND THE THIRD IS 6S, BUT NOT TO EXCEED 300 FT IF A SPACING LESS THAN 300 FT IS USED APPROACHING THE CURVE. THE DISTANCE SHOULD BE ADJUSTED ACCORDINGLY. FOR CURVES UP THRU 5° USE TABLE AT LEFT. INTERPOLATE WHEN NECESSARY.



--SPECIFICATIONS--
CURRENT ALABAMA DEPARTMENT OF TRANSPORTATION

THIS DRAWING REPRESENTS DESIGNS PREPARED FOR USE BY THE ALABAMA DEPARTMENT OF TRANSPORTATION AND IS NOT TO BE COPIED, REPRODUCED, ALTERED, OR USED BY ANYONE, OR ANY ORGANIZATION, WITHOUT THE EXPRESSED WRITTEN CONSENT OF THE ALABAMA DEPARTMENT OF TRANSPORTATION REPRESENTATIVE AUTHORIZED TO APPROVE THIS USE. ANYONE MAKING UNAUTHORIZED USE OF THIS DRAWING MAY BE PROSECUTED TO THE FULLEST EXTENT OF THE LAW.

REVISIONS

- Added to CADD on 10-11-00 by J.F.T.
- Changed #2 U-CHANNEL ONLY to #3 U-CHANNEL ONLY. Changed #2 HAZARD MARKER INSTALLATION TYPE "C-1" to #3 U-CHANNEL ONLY. Changed #2 STEEL OR ALUMINUM U-CHANNEL DELINEATOR POST to #3 STEEL OR ALUMINUM U-CHANNEL DELINEATOR POST and removed in NOTE #2 U-CHANNEL and replaced with #3 U-CHANNEL on 09-22-11 by J.F.T.

ALABAMA DEPARTMENT OF TRANSPORTATION
1409 COLISEUM BOULEVARD
MONTGOMERY, AL 36130-3050

DESIGN BUREAU SPECIAL DRAWING
DETAILS OF CENTERMOUNT DELINEATORS AND HAZARD MARKERS

Bureau Std Engr: D.J.W.
DRAWN BY: _____ DATE DRAWN: 6-04-91

SPECIAL DRAWING NO
HMI-707

INDEX NO
70701