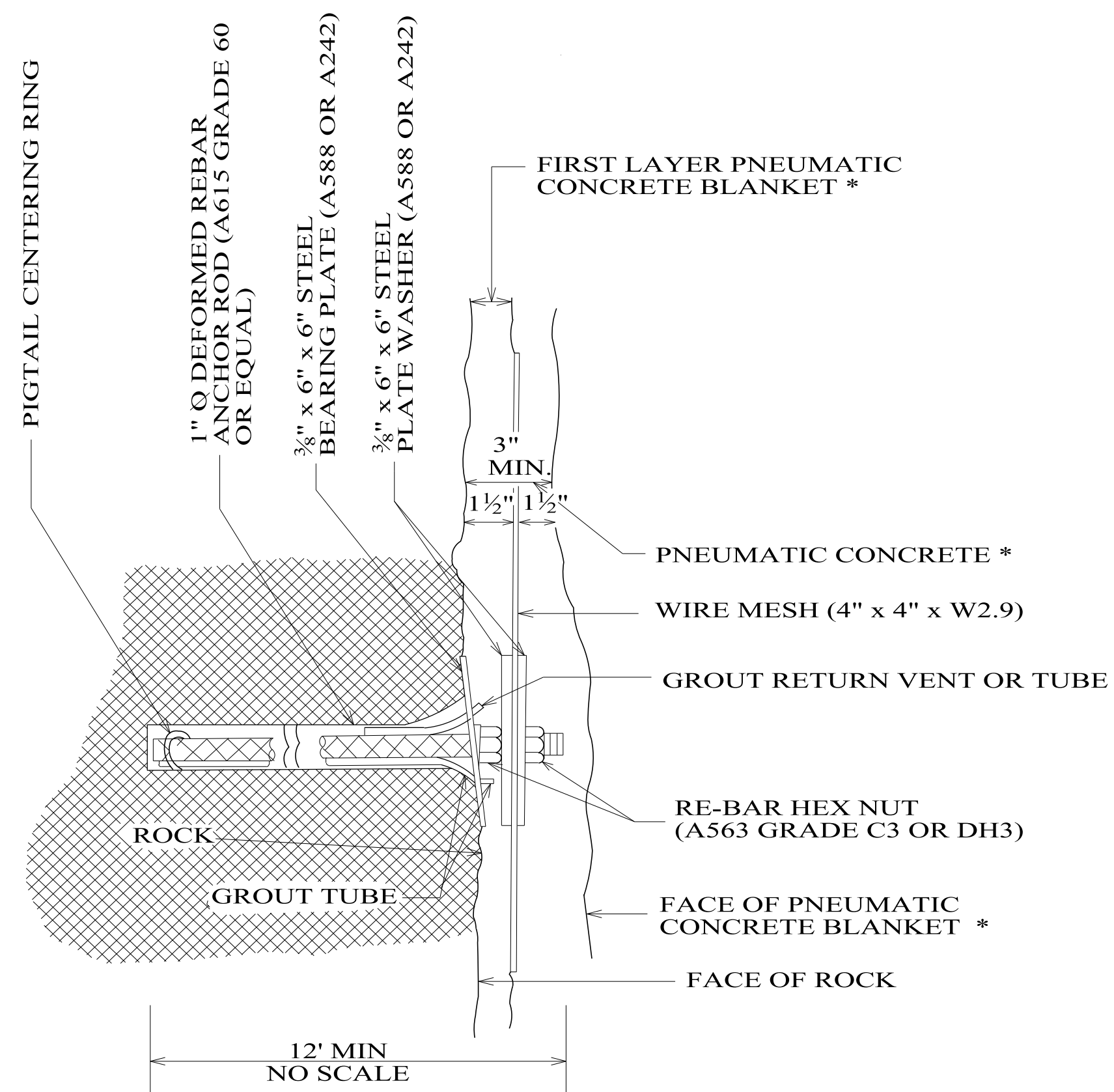
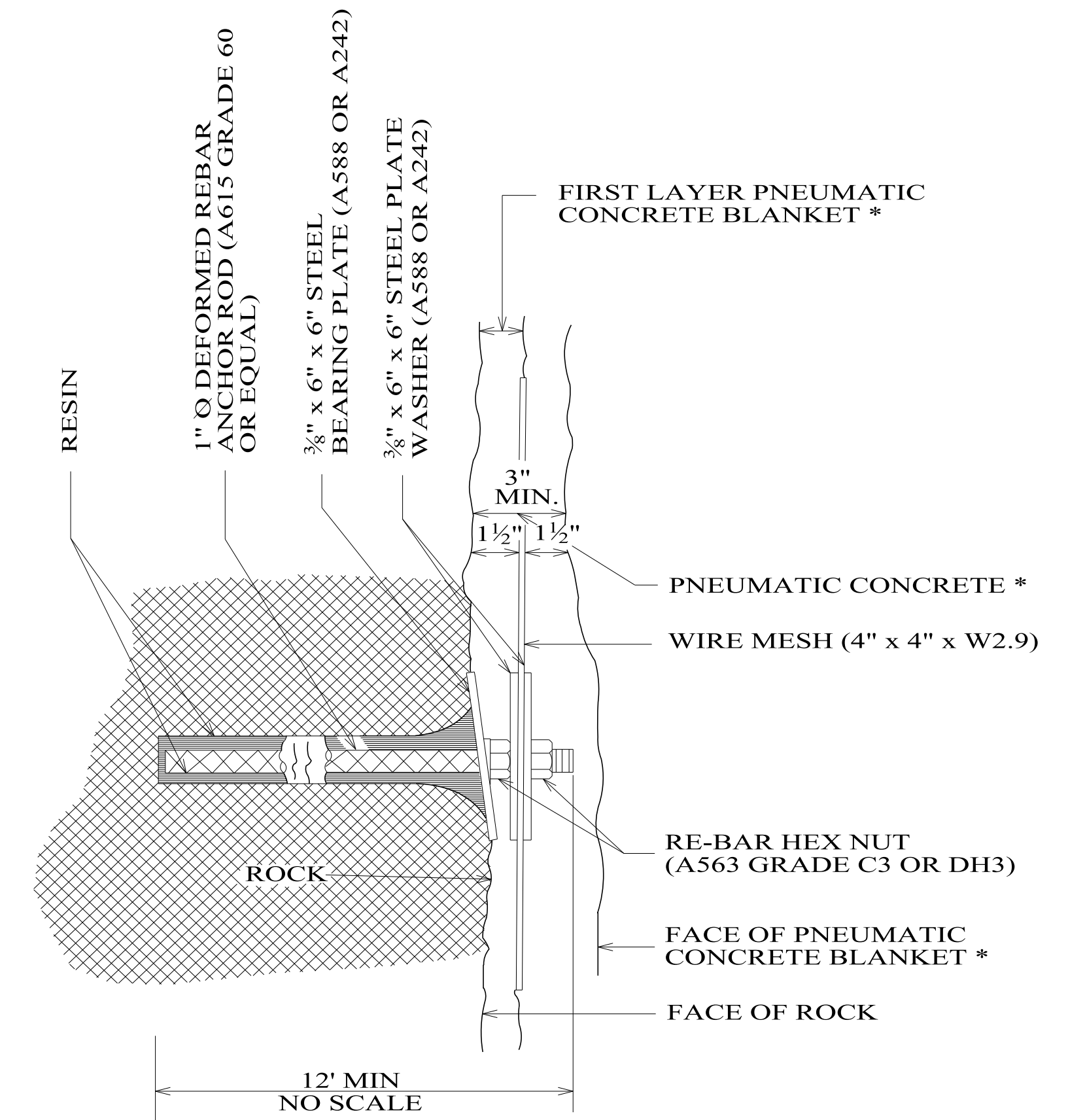


SECTION "AA"
ALTERNATE NO 1
WILLIAMS HOLLOW CORE SYSTEM



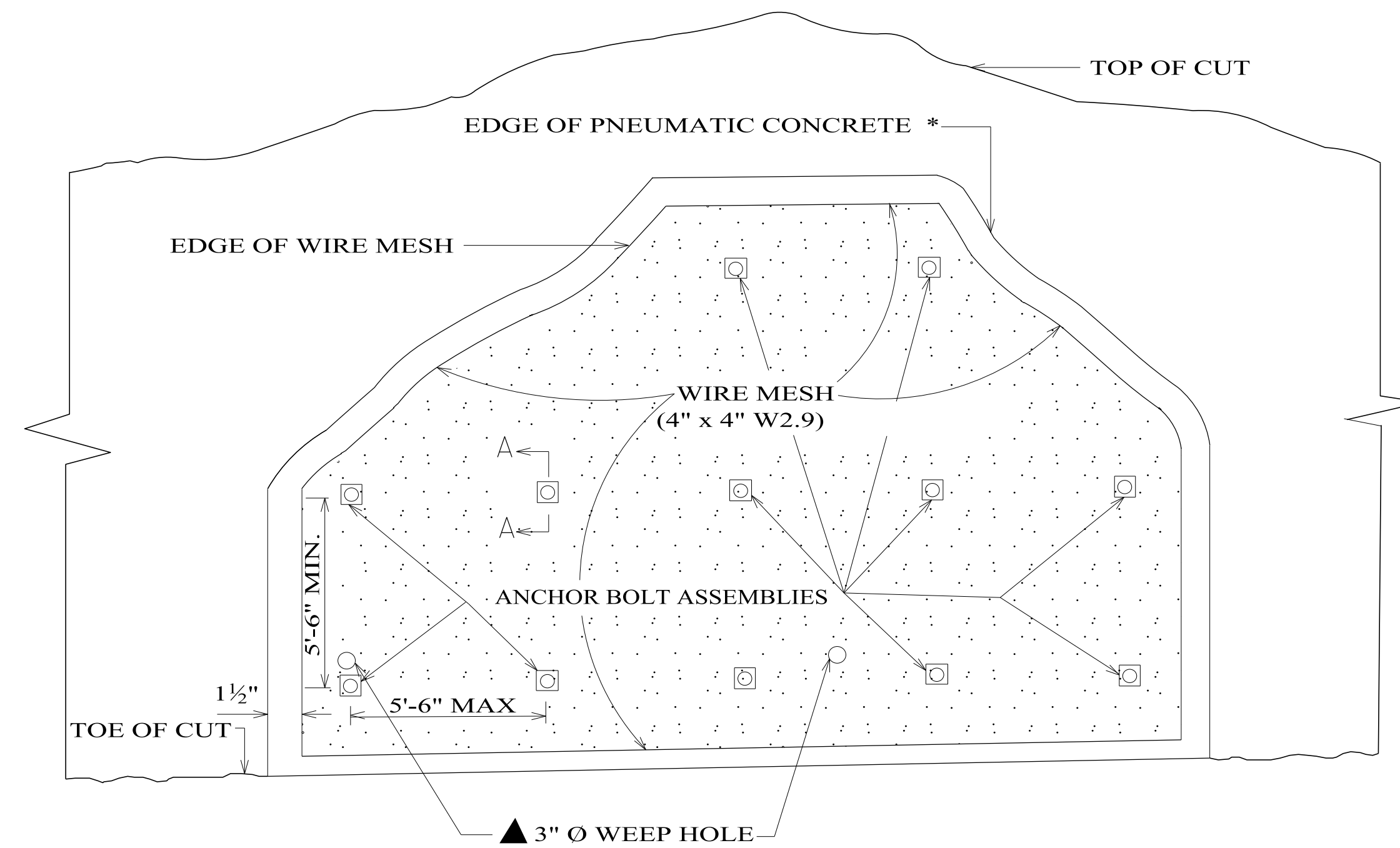
SECTION "AA"
ALTERNATE NO 2
TWO TUBE SYSTEM



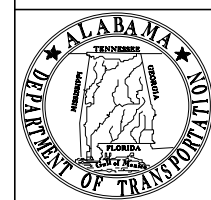
SECTION "AA"
ALTERNATE NO 3
RESIN OR PRE-MEASURED
GROUT SYSTEM

* NOTE: ALL REFERENCES TO PNEUMATIC CONCRETE BLANKET ALSO WILL APPLY TO SHOTCRETE CONCRETE MIX (SECTION 571) IF CALLED FOR IN THE PLANS AND SPECIFICATIONS AS PER THE BUREAU OF MATERIALS AND TESTS RECOMMENDATION.

▲ NOTE: 3" Ø WEEP HOLES SPACED AS DIRECTED BY THE ENGINEER



DETAILS OF PNEUMATIC BLANKET *
(TO BE USED AT LOCATIONS AS DIRECTED BY THE ENGINEER)



ALABAMA DEPARTMENT
OF TRANSPORTATION
1409 COLISEUM BOULEVARD
MONTGOMERY, AL 36130-3050

THIS DRAWING REPRESENTS DESIGNS PREPARED FOR USE BY THE ALABAMA DEPARTMENT OF TRANSPORTATION AND IS NOT TO BE COPIED, REPRODUCED, ALTERED, OR USED BY ANYONE, OR ANY ORGANIZATION, WITHOUT THE EXPRESSED WRITTEN CONSENT OF THE ALABAMA DEPARTMENT OF TRANSPORTATION REPRESENTATIVE AUTHORIZED TO APPROVE THIS USE. ANYONE MAKING UNAUTHORIZED USE OF THIS DRAWING MAY BE PROSECUTED TO THE FULLEST EXTENT OF THE LAW.

REVISIONS:
1. Added to CADD on 10-13-2000 by J.F.T.
2. Adjusted note to reference the use of SHOTCRETE Concrete Mix 8-4-2006 W.W.A.

Bureau Std Engr: D.J.W.
DRAWN BY:
DATE DRAWN: 12-16-1987
REVISED DATE: 8-4-2006

DESIGN BUREAU SPECIAL DRAWING
PNEUMATIC CONCRETE BLANKET AND
ALTERNATES FOR INSTALLATION OF ANCHOR
BOLT ASSEMBLIES

NOT TO SCALE

--SPECIFICATIONS--
CURRENT ALABAMA DEPARTMENT OF TRANSPORTATION

SPECIAL DRAWING NO

PCB-217

INDEX NO

21701